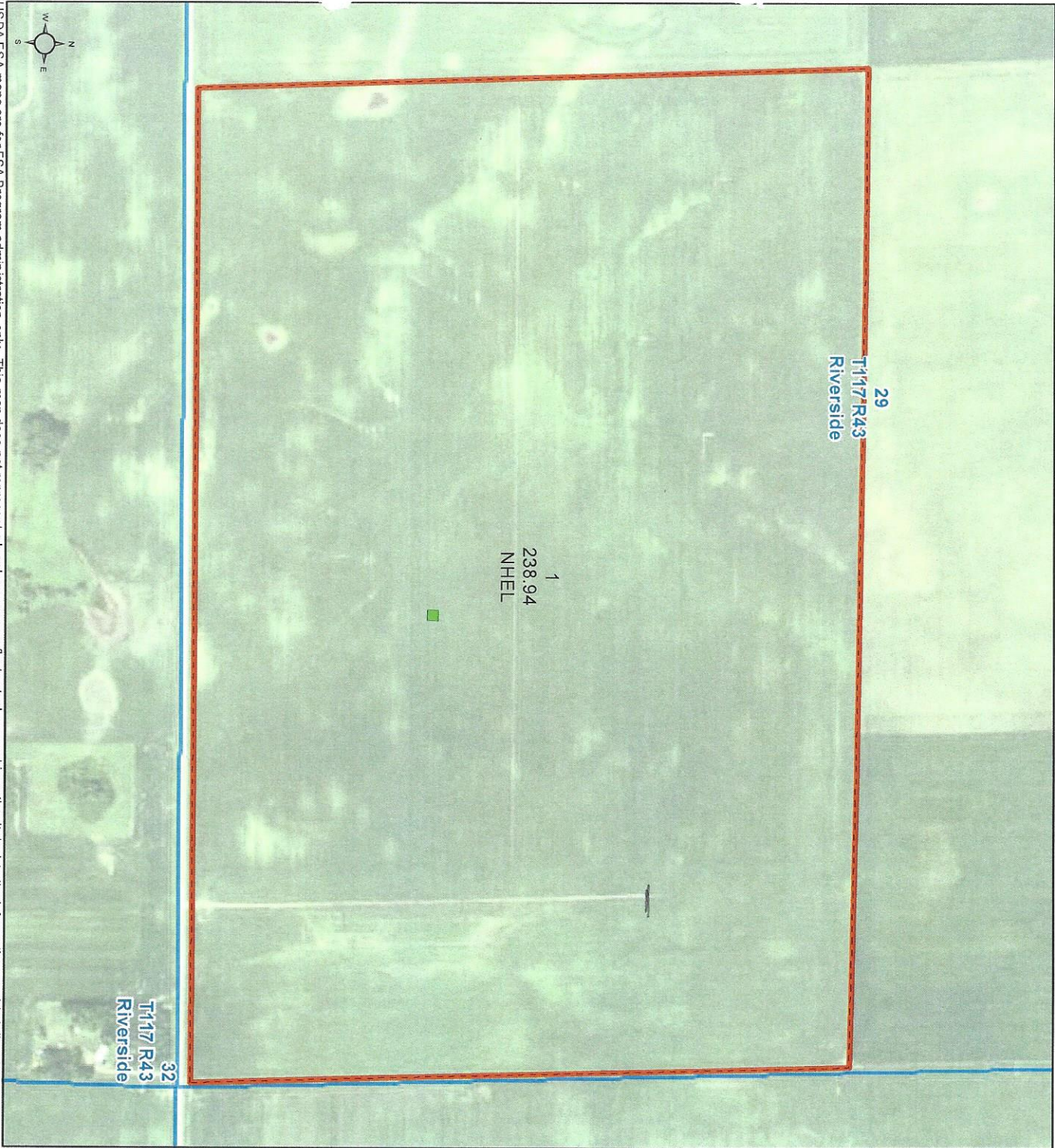


Farm 6185

Tract 2456



2015 Program Year

Map Created August 05, 2015



Unless otherwise noted: crops are non-irrigated

- Corn = yellow for grain
- Soybeans = common soybeans for grain
- Wheat = HRS for grain or HRW for grain
- Oats and Barley = Spring for grain
- Rye = for grain
- Peas = process

- Alfalfa, Mixed Forage AGM, IGS = for forage
- Beans = Dry Edible
- MAG = for GZ
- Canola = Spring for seed
- Sunflower = oil or non-oil for grain

Common Land Unit

- Cropland
- Tract Boundary
- PLSS

Wetland Determination Identifiers

- Restricted Use
- Limited Restrictions
- Exempt from Conservation Compliance Provisions

Tract Cropland Total: 238.94 acres

USDA FSA maps are for FSA Program administration only. This map does not represent a legal survey or reflect actual ownership; rather it depicts the information provided directly from the producer and/or the 2013 NAI imagery. The producer accepts the data as is and assumes all risks associated with its use. The USDA Farm Service Agency assumes no responsibility for actual or consequential damage incurred as a result of any user's reliance on this data outside FSA Programs. Wetland identifiers do not represent the size, shape, or specific determination of the area. Refer to your original determination (CPA-026 and attached maps) for exact boundaries and determinations or contact NRCS.